

# School Reopening Plans

Update for the Board of Education  
July 27, 2021



**GAVIN PUBLIC SCHOOLS DISTRICT 37**



# Reconnect, Support, Accelerate

- Top Priorities
  - Get our students back into school - with as few disruptions to learning as possible
  - Safe learning conditions
  - Focus on teaching and learning
  - Support learning and SEL needs of staff and students
  - Clearly communicate



# Updated School Guidance

**A Collection of Guidance has been provided by the CDC, IDPH, LCPHD, and ISBE:**

- Return to full in-person learning...
- Promoting COVID-19 vaccination for those eligible
- Consistent and correct use of masks by people who are not fully vaccinated
- Physical distancing of least 3 ft.
- Screening testing in K-12 schools
- Clear contact tracing protocols for quarantining (guidance arrived yesterday)
- Proper hand hygiene
- Staying home when sick and getting tested
- Improved ventilation
- Routine cleaning with disinfection

# Remote Learning Options

- Full in-person learning for 21-22
  - Two Exceptions
    - Students with medical conditions that place them at increased risk with in-person learning will have the option to submit documentation for consideration of a fully remote learning option.
    - Students placed under mandatory quarantine by District or local health department

"remote instruction be made available for students who have not received a COVID-19 vaccine **or** who are not eligible for a COVID-19 vaccine, **only while they are under quarantine** consistent with guidance or requirements from a local public health department or the Illinois Department of Public Health"

# What are the Health Experts Saying?

CDC: July 9th, 2021:

***“Masks should be worn indoors by all individuals (age 2 and older) who are not fully vaccinated. Consistent and correct mask use by people who are not fully vaccinated is especially important indoors and in crowded settings, when physical distancing cannot be maintained.”***

IDPH: July 9th, 2021:

***“The Illinois Department of Public Health (IDPH) is fully adopting the Centers for Disease Control and Prevention (CDC) updated guidance for COVID-19 Prevention in Kindergarten (K)-12 Schools”***

# What are the Health Experts Saying?

ISBE; July 13th, 2021:

***“If school administrators decide to remove any of the prevention strategies based on local conditions, remove them one at a time and monitor closely (with adequate testing through the school and/or community) for any increases in COVID-19 cases.”***

# What are the Health Experts Saying?

**IDPH: July 23rd, 2021:**

*“Cases have been steadily increasing in Lake County over the past month, with Lake County’s positivity rate more than doubling in the last week...”*

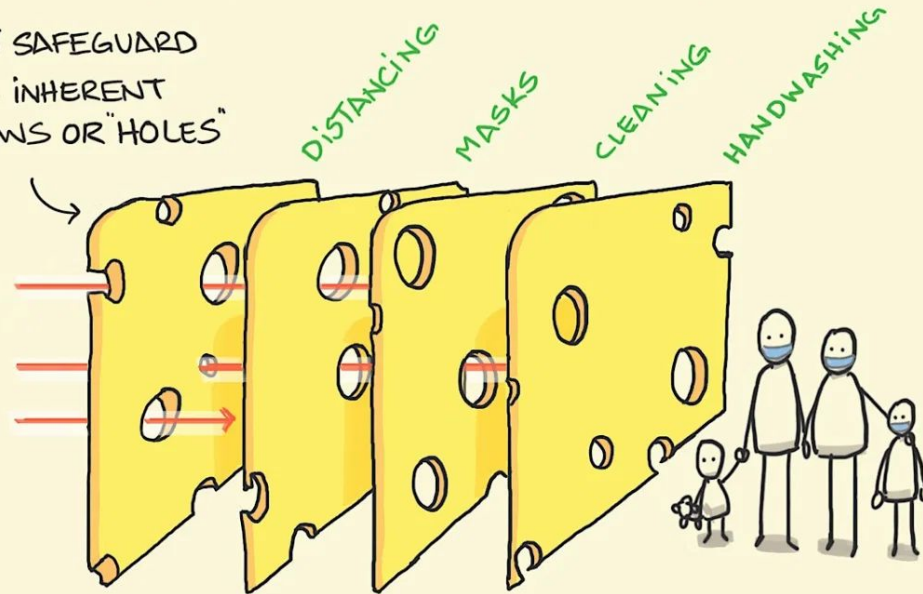
*The Lake County Health Department strongly recommends school districts begin the 2021–2022 school year with layered COVID-19 prevention strategies that are outlined in the updated [CDC guidance for K-12 schools](#) and adopted by the Illinois Department of Public Health (IDPH).*

*‘Children, even if without symptoms and with lower risk for severe illness, are still able to become ill with COVID-19 and spread it to others.’ With younger children unable to be vaccinated at this time, layered prevention strategies are the best way to keep our young students safe throughout the school year and keep students in the classroom.”*

# THE SWISS CHEESE MODEL

FOR UNDERSTANDING ACCIDENTS AND IMPROVING SAFETY

ANY SAFEGUARD  
HAS INHERENT  
FLAWS OR "HOLES"



PROBLEMS OCCUR WHEN MULTIPLE "HOLES" LINE UP

MODEL: J REASON

sketchplanations



# What are we doing about masks?

Following CDC, IDPH, and ISBE Guidance:

- Masking required for unvaccinated individuals indoors
- Masking optional for vaccinated individuals
- **Caveat #1:** Masks not required when outdoors
- **Caveat #2:** All students and bus drivers, regardless of vaccination status, must wear a mask on the bus
- **Caveat #3:** We need to identify the vaccination status of individuals to aid in procedures and contact tracing.
  - What to expect -





Shield is a COVID test that identifies the virus with 99% accuracy (pre-symptomatic and asymptomatic individuals, too).

- It is a drool/saliva test that checks for evidence of the virus.
- Twice per week; cart brought to your room (STILL WORKING OUT DETAILS)
- Provides an incredible sense of calm and security to our staff members and families because we are proactively mitigating risk.
- Allows us to follow one set of protocols, per ISBE, because we have a testing program in place. Districts without a testing program in place have to follow a different set of protocols that would be more restrictive and limiting (ie. 6ft of social distancing vs 3 ft).
- COULD limit the need to quarantine close contacts. This would keep our kids in school MUCH more frequently, which is the goal!
- Is conducted by thousands of districts across the country, and being used by District 124 and District 124 feeder districts.
- Would be available to all staff (not mandatory) AND anyone in the community who would like a COVID test.
- Will come with an opt-in option available so no one would feel pressured to participate
- Optional for staff and community members
- Is FREE! - paid for by IDPH.



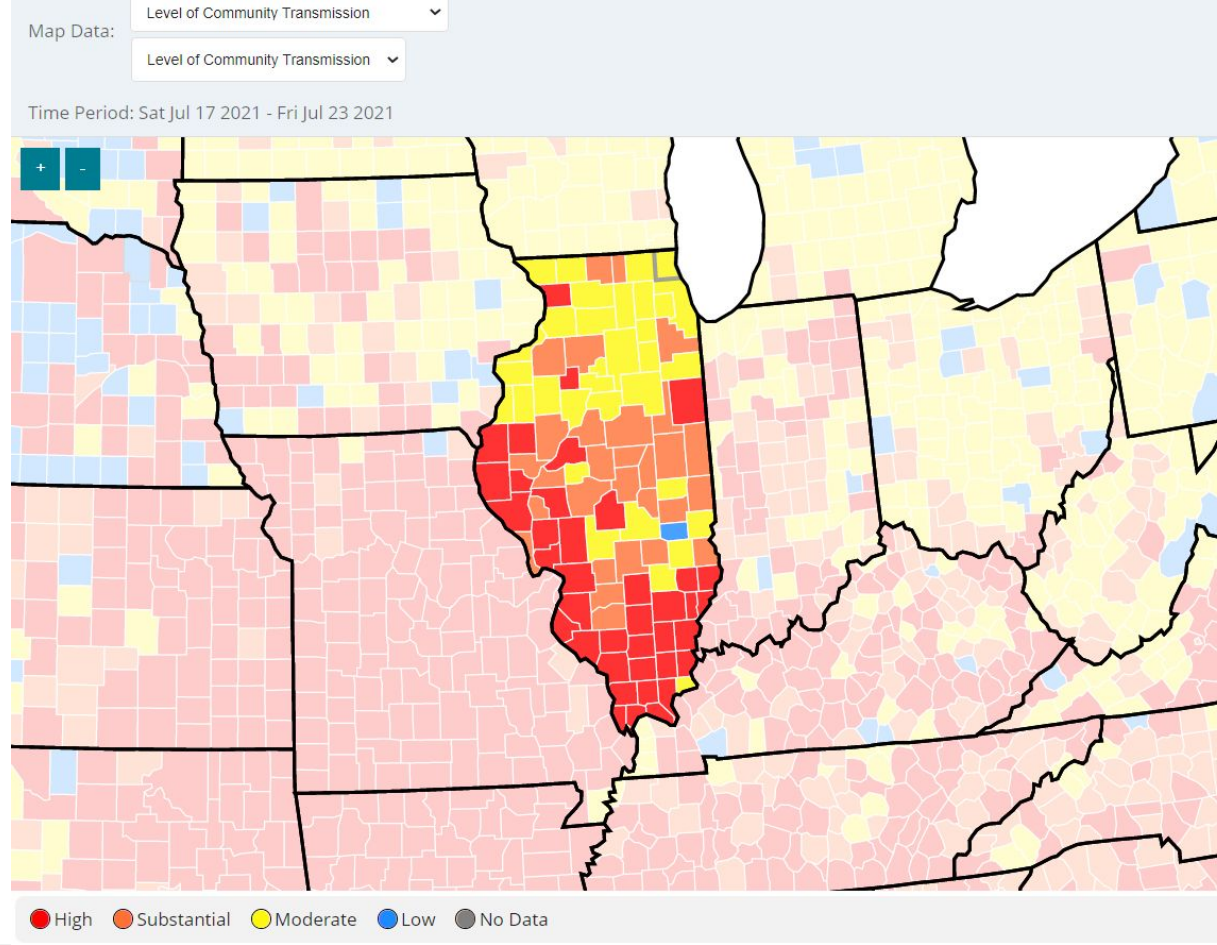
# Close Contacts and Quarantining

- **Close Contact** - For K-12 school setting, unvaccinated individuals who are less than 3' from a positive individual for more than 15 cumulative minutes in a 24-hour period as long as both students were engaged in “consistent and correct mask use, physical distancing...”
  - [CDC Close Contact Link](#)
- Quarantining required only for unvaccinated
- 4 Scenarios for Quantining



# Data as of this morning...

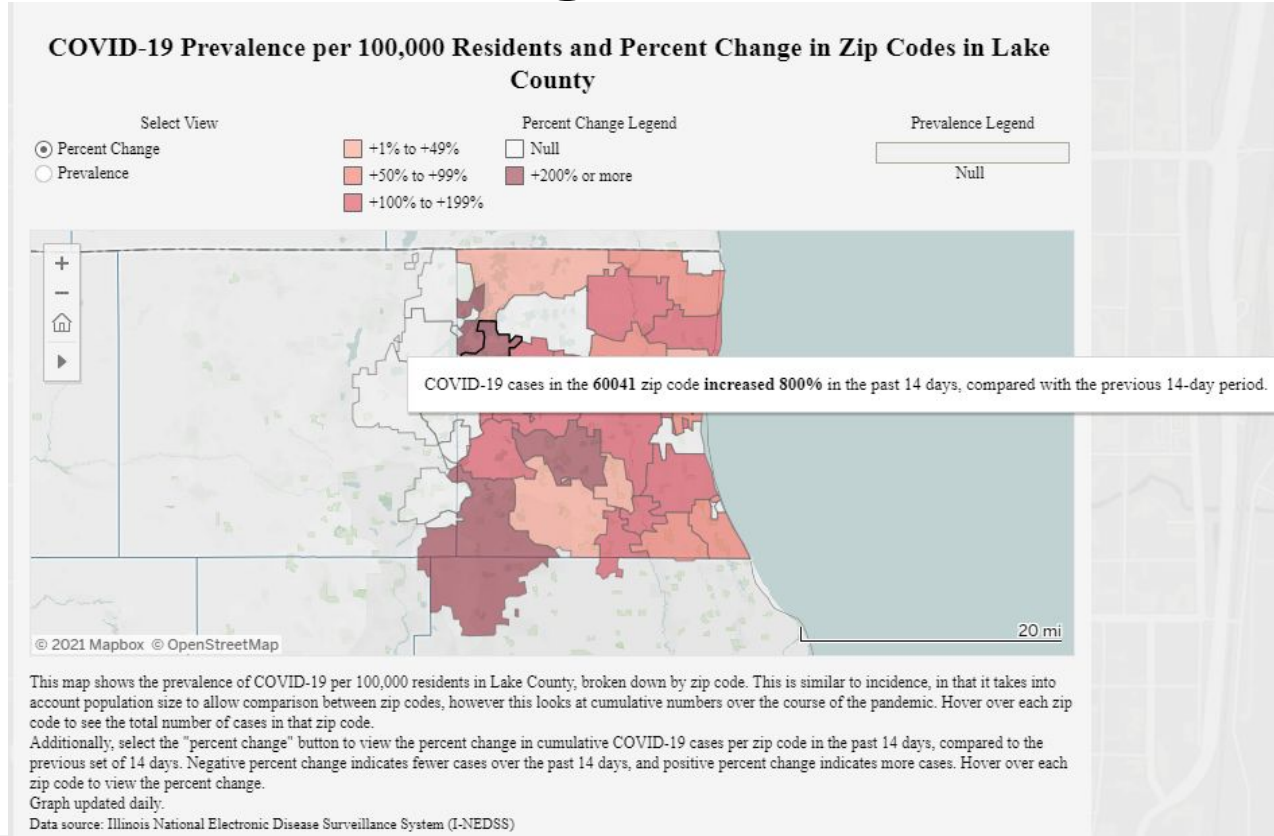
Indicator	Low Transmission Blue	Moderate Transmission Yellow	Substantial Transmission Orange	High Transmission Red
Total new cases per 100,000 persons in the past 7 days <sup>2</sup>	0-9	10-49 <b>60041</b> <b>65.2/100K</b>  <b>Lake County</b> <b>34.46/100K</b>	50-99	≥100
Percentage of NAATs that are positive during the past 7 days <sup>3</sup>	<5.0%	5.0%-7.9%  <b>60041</b> <b>5.77%</b>  <b>Lake County</b> <b>2.55%</b>	8.0%-9.9%	≥10.0%



# GAVIN PUBLIC SCHOOLS DISTRICT 37



# Data as of this morning...



**GAVIN PUBLIC SCHOOLS DISTRICT 37**





# Frequently Asked Questions

- **Are masks required?** - For unvaccinated individuals indoors, yes
  - to be reviewed every few weeks based on data.
  - No masks required outdoors.
  - **ON BUS** all must be masked per CDC
- **Will COVID-19 vaccinations be required?** - Not at this time
- **Will quarantine after travel be required?** - Not at this time
- **Are we doing routine weekly testing?** Yes, for unvaccinated only (with parental consent) per CDC

# Frequently Asked Questions

- **Is it possible to have different rules at different schools?** - Possibly, depends upon school transmission rates --we will mitigate locally at specific schools as needed
- **Will we provide remote learning?** - For students who need to quarantine (unvaccinated) - working on a live streaming set up. We will provide “eyes and ears into the classroom” if a child is quarantined due to a positive COVID-19 test or if they are a close contact per CDC guidance



# Frequently Asked Questions

- **Will we have recess (Pre-K-8)?** - Yes; we will revisit if transmission increases
- **Will we have to keep seating charts for classes, buses, lunch, etc. for contract tracing purposes?** - Yes, as best possible
- **Will lunch require 6ft distancing?** - Not at this time, (yes if transmission increases) - lunch will be 3ft-6ft, as best possible
- **Are we still offering testing for symptomatic individuals?** Yes, just like last year, we will have Binax testing available
- **Will students be changing classes in middle school?** - Yes

# Frequently Asked Questions

- **Are we going to require students to wash or sanitize hands upon arrival and before eating?** - Yes, we need to encourage good hygiene
- **Will all staff and students still be required to self-certify?** - No, if a student arrives on campus, we are bringing them into the building under the assumption that they are symptom free. If a staff member notices a child with symptoms related to COVID-19, that child will be asked to go to the nurse immediately for further review.
- **Will we be able to resume before/after school clubs/activities in person?** - Yes
- **Will students be allowed to have snacks?** - Yes

# Frequently Asked Questions

- **Can students take masks off during outdoor recess and outdoor PE if they are not vaccinated?** - Yes; no masks needed outdoors
- **Will recess still need to be structured so pods (classes) are together?** - Outdoors no, indoors yes for contact tracing
- **Are we relaxing material sharing for recess & classes?** - Yes
- **Will we have our meet the teacher events at the beginning of the year?** - Yes, with masks for unvaccinated individuals

# Next Steps

- Continue to promote vaccinations
  - Leading public health prevention strategy
- Identify vaccine status of individuals to aid in procedures and contact tracing
- Communicate plans to the community
- Continue to work with Lake County Health Department on processes
  - Guidance subject to change depending on local circumstances including vaccine levels and community spread of COVID-19
- Monitor transmission weekly and reevaluate indoor mask wearing and other mitigation efforts



**GAVIN PUBLIC SCHOOLS DISTRICT 37**

